

C2HAMPS Parents Guide



elchemieducation

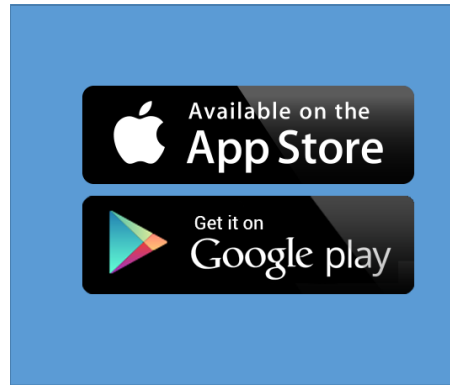
C2HAMPS Mobile Apps

Search for C2HAMPS on Apple's App Store or Google Play

iOS App
<https://itunes.apple.com/sg/app/c2hamps/id1031536075?mt=8>

<https://play.google.com/store/apps/details?id=net.elchemi.c2hamps&hl=en>

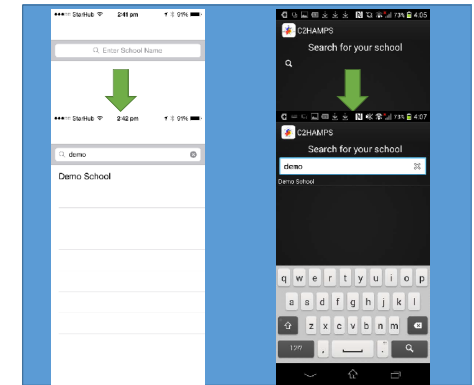
For users who are not using any of the supported mobile devices, access C2HAMPS Web portal through URL:
<https://cantonmentpri.c2hamps.elchemi.net>



elchemieducation

Configure the app

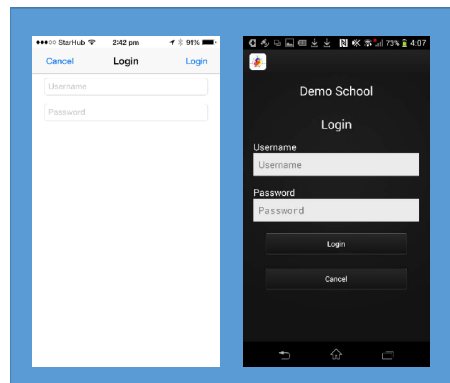
- When the app is first launched after being installed, you may be prompted if you wish to receive notifications. Please select OK to allow the app to receive notifications from the school.
- You will first need to search for your child's school.
- Type in the first few letters of your school name and tap on the search button on your on-screen keyboard
- Select your school name from the list of results. This will save your school name in the app's settings.



elchemieducation

Logging On

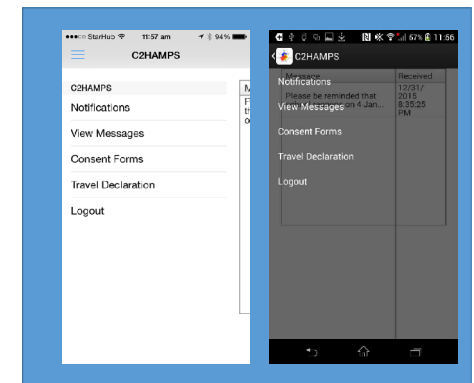
- Type in your user ID and password which is provided by your school and tap on the "Login" button
- Note: if you had chosen the wrong school in the previous step, you can tap on the "Cancel" button to go back and re-select your school



elchemieducation

Menu

- To access a module within C2HAMPS, simply tap on the name of the module you wish to access.



Default login ID is the student's BC number appended with a 'P' followed by a "_1" or "_2" depending on which parent/guardian is accessing the app. Each student is allocated two sign in accounts.

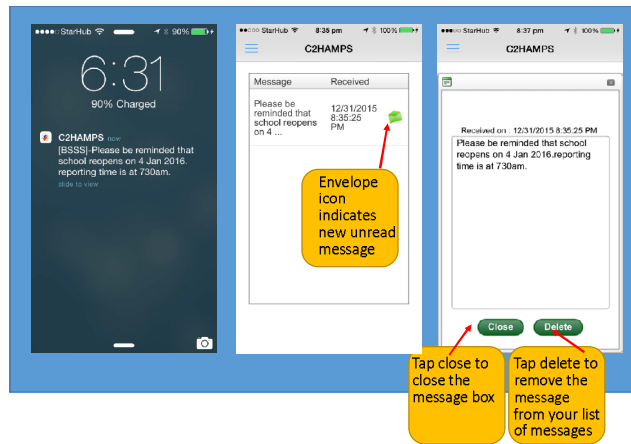
Eg : Child's BC number if T0123456Z, one login ID would be PT0123456Z_1 and the other login would be PT0123456Z_2

Default password is your child's BC number with alphabets in capital letters.



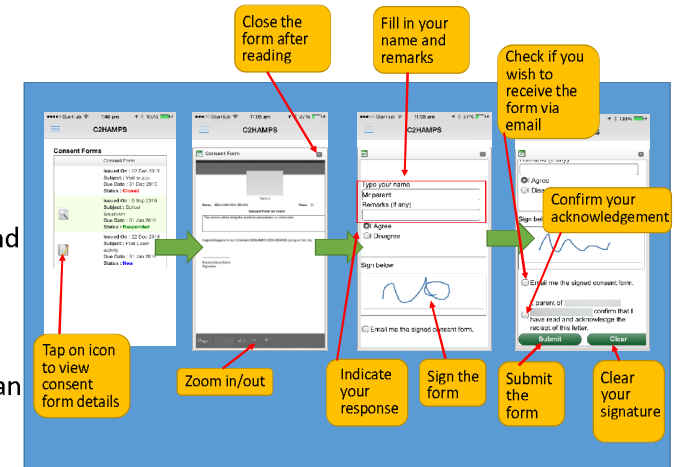
View Notifications

- When the school sends a message to you, you will receive a notification on your device.
- As the notification message may not be displayed in full, you would need to log on to the app to view the full message
- Tap on the message in the message list to view the whole message



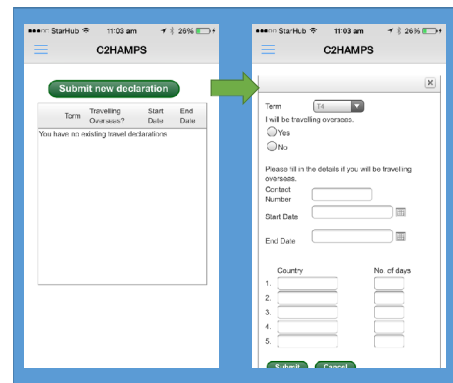
Consent Form

- The school may send parents consent forms from time to time.
- Parents can view the consent form online and respond to the school.
- Sign consent form digitally
- Signed consent form can be emailed to parent



Travel Declaration

- Parents submit declarations online
- Indicate No if not travelling
- Fill in the details and tap Submit if travelling



Messaging

- One/Two way messaging between teachers and parents
- Send message icon will not be available if teacher has indicated to be a read-only group

